



Southey Street, SE20 | £670,000

02087029777
sydenham@pedderproperty.com





In General

- No onward chain
- End of terrace Victorian home
- Two receptions
- Kitchen / breakfast room
- Private rear garden
- Three double bedrooms
- Two bathrooms
- Excellent transport links
- Very close to Crystal Palace Park

In Detail

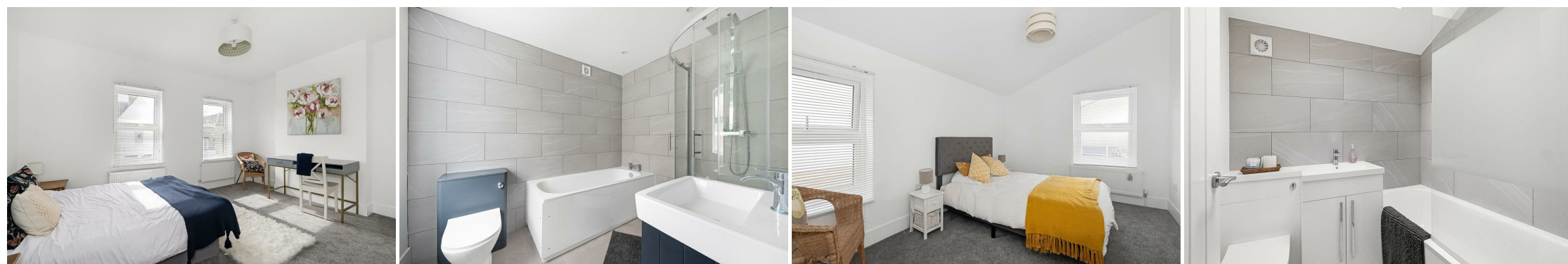
A beautifully refurbished three bed, two bath end of terrace Victorian home on a charming residential road in the heart of Penge.

Thoughtfully updated throughout, it blends elegant period features with a fresh, contemporary finish. Arranged over two floors, it offers bright, well-proportioned living space, including a light-filled front reception with bay window, a second reception/dining room ideal for entertaining, and a kitchen breakfast room with ample storage and work surfaces. The property has also been extended to the rear, enhancing the overall living space. Upstairs are three double bedrooms and a stylish family bathroom with skylight. There is also a large loft, suitable for development subject to planning.

Southey Street is well connected, close to Crystal Palace Park, independent cafés including Cozy Joy Café at the end of the road, restaurants, and excellent transport links including Penge East and Penge West.

EPC: D | Council Tax Band: D

This property is for sale by Modern Method of Auction allowing the buyer and seller to complete within a 56 Day Reservation Period. Interested parties' personal data will be shared with the Auctioneer (iamsold Ltd). If considering a mortgage, inspect and consider the property carefully with your lender before bidding. A Buyer Information Pack is provided, which you must view before bidding. The buyer is responsible for the Pack fee. For the most recent information on the Buyer Information Pack fee, please contact the iamsold team. The buyer signs a Reservation Agreement and makes payment of a Non-Refundable Reservation Fee of 4.5% of the purchase price inc VAT, subject to a minimum of £9,600 inc. VAT. This Fee is paid to reserve the property to the buyer during the Reservation Period and is paid in addition to the purchase price. The Fee is considered within calculations for stamp duty. Services may be recommended by the Agent/Auctioneer in which they will receive payment from the service provide



Floorplan

Southey Street, SE20

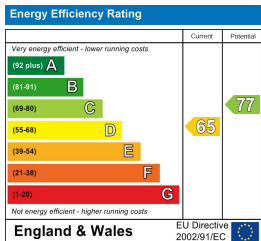
Approximate Gross Internal Area
94.6 sq m / 1018 sq ft



Ground Floor

First Floor

Copyright www.pedderproperty.com © 2026
 These plans are for representation purposes only as defined by RICS - Code of Measuring Practice. Not drawn to Scale. Windows and door openings are approximate. Please check all dimensions, shapes and compass bearings before making any decisions reliant upon them.



Pedder Property Ltd trading as Pedder for themselves and for the vendor/landlord of this property whose agents they are, give notice that (1) these particulars do not constitute any part of an offer or contract, (2) all statements contained within these particulars are made without responsibility on the part of Pedder or the vendor/landlord, (3) whilst made in good faith, none of the statements contained within these particulars are to be relied upon as a statement of representation or fact, (4) any intending purchaser/tenant must satisfy him/herself by inspection or otherwise as to the correctness of each of the statements contained within these particulars, (5) the vendor/landlord does not make or give either Pedder or any person in their employment any authority to make or give representation or warranty whatsoever in relation to this property.